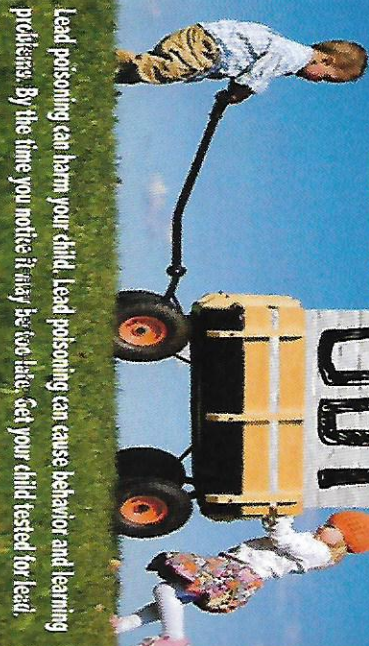


Get the LEAD

OUT



Lead poisoning can harm your child. Lead poisoning can cause behavior and learning problems. By the time you notice it may be too late. Get your child tested for lead.

Children with ASD have poor detoxification mechanisms. Children with ASD do not excrete heavy metals, such as Mercury, effectively. Heavy metal toxicity causes neurologic, immunologic, gastrointestinal, and psychiatric abnormalities.

When looking for heavy metal overload, what you find is the tip of the iceberg. Even on challenge testing it may take months for a child to start excreting heavy metals, such as mercury.

Suspicion of heavy metal toxicity is based on symptoms. Initial laboratory evidence is often unconvincing.

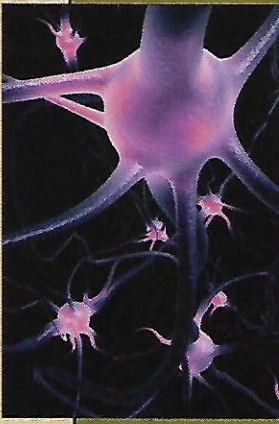
- Our Basic Strategy
- History and Physical Examination
- Laboratory Testing
- Clean Up Environmental Controls
- Dietary Interventions
- Address Gastrointestinal Health
- Foundational Nutrients
- Treat underlying Immune Issues and Inflammation
- Support Detoxification Pathways
- Heavy Metal Detoxification
- HBOT both soft n hard chamber

Due to the extreme variability of this disease, each child will require a different treatment plan, and there is no solid medical test to assess the efficacy of these interventions.

AUTISM = Genetic Susceptibility Time-Sensitive Toxic Insults

• One important fact is that Autism Spectrum Disorder (ASD) seems to be composed of multiple diseases presenting with similar symptoms, so there is not one treatment that works for everyone with ASD. The extreme variability demands a highly individualized treatment plan, and sorting through this even for one child can be a monumental task. Working with the parents, and strongly encouraging them to become their child's own case manager, might be the best conceptual approach. It's also important to keep in mind that many of these parents are already overwhelmed with the child's needs.

- It is thought that many of the "autistic behaviors" are manifestations of physiological conditions. For example, head-banging and sleep disturbances may be responses to inexpressible pain. Addressing the physiological abnormalities likely will result in significant improvement in autistic behaviors, and consequently more effective educational interventions.
- Heavy metal accumulation may play a role as well, but chelation therapy is considered after careful testing. Reducing toxin load will likely benefit these children. Toxins may be environmental (insecticides, herbicides, mercury, arsenic, automobile fumes, etc.) or household (formaldehyde, cleaning agents, volatile organic compounds, lead, phthalates, etc.).



Parents should ask themselves the following questions: 1. has the mother received vaccination before or during pregnancy? 2. did the mother receive dental amalgam treatment during pregnancy? 3. has the mother smoked prior to, or during pregnancy? 4. has she eaten fish regularly during pregnancy and nursing? 5. did vaccination cause a noticeable change in behavior?

If any of these questions are answered with Yes, we can expect the child to show a maternal burden, and it may or may not yet be significant.

Extra care should be taken that an existing burden is not increased through the addition of mercury-containing foods, medicines or other sources. An already fragile system may not be able to tolerate this. In fact, it is not unusual that a child suddenly turns autistic, not after the first immunization but after successive vaccination treatments.

AUTISM is a NeuroImmune Disorder

Induced by



manifests itself in the brain



Dr. SAXENA
Integrative Medicine Pvt. Ltd.
www.healthylife